

# Dual-in-line sockets 2.54mm

Open frame

Solder tail



深圳平志电子有限公司  
SHENZHEN PIZCONN ELECTRONIC CO.,LTD

TEL:86-755-84106483 61121902

FAX:86-755-61121902

E-mail:ivan@pizconn.com.cn

## Ordering information

TPA10 - NNN X - B P P 0743A

No. of Positions	Row spacing code	Pin Plating code	Clip Plating code
	3 7.62mm	1 Tin150 $\mu$ "	1 Tin150 $\mu$ "
	4 10.16mm	2 Tin200 $\mu$ "	2 Tin200 $\mu$ "
	6 15.24mm	3 GF	3 GF
	9 22.86mm	4 Gold2 $\mu$ "	4 Gold2 $\mu$ "
		5 Gold3 $\mu$ "	5 Gold3 $\mu$ "
		6 Gold10 $\mu$ "	6 Gold10 $\mu$ "
		7 Gold15 $\mu$ "	7 Gold15 $\mu$ "
		S Special	S Special

## Series: TPA10

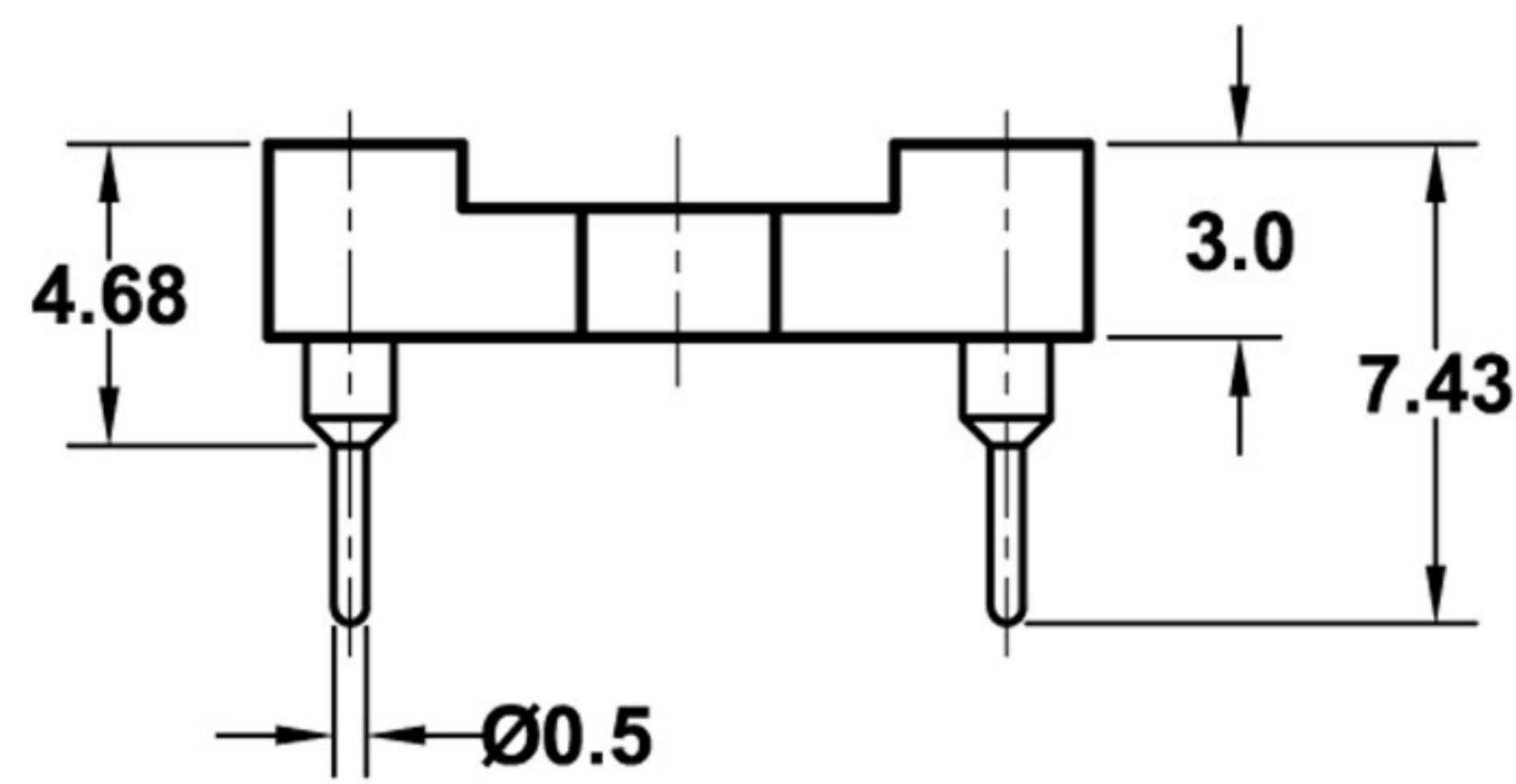
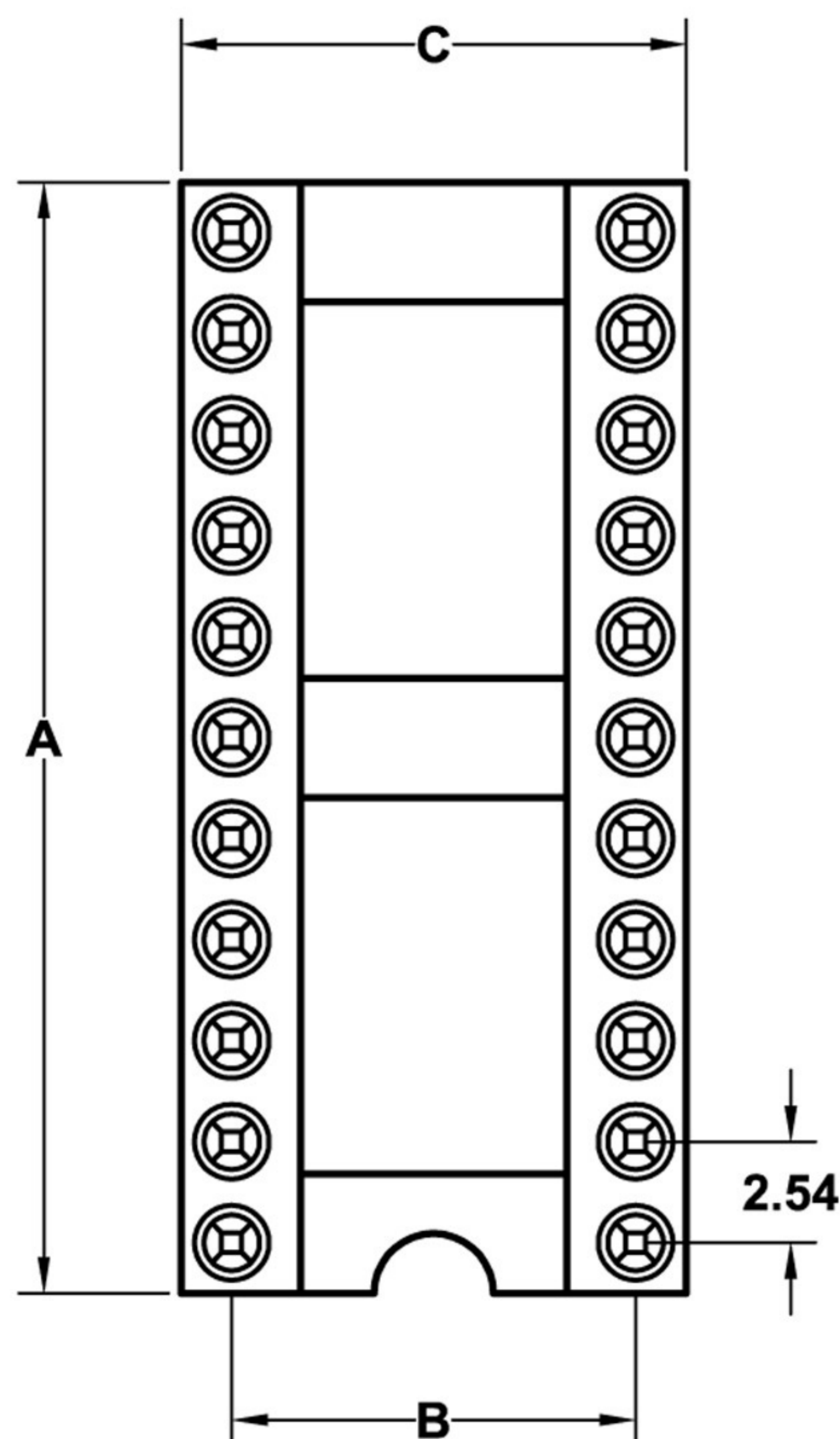
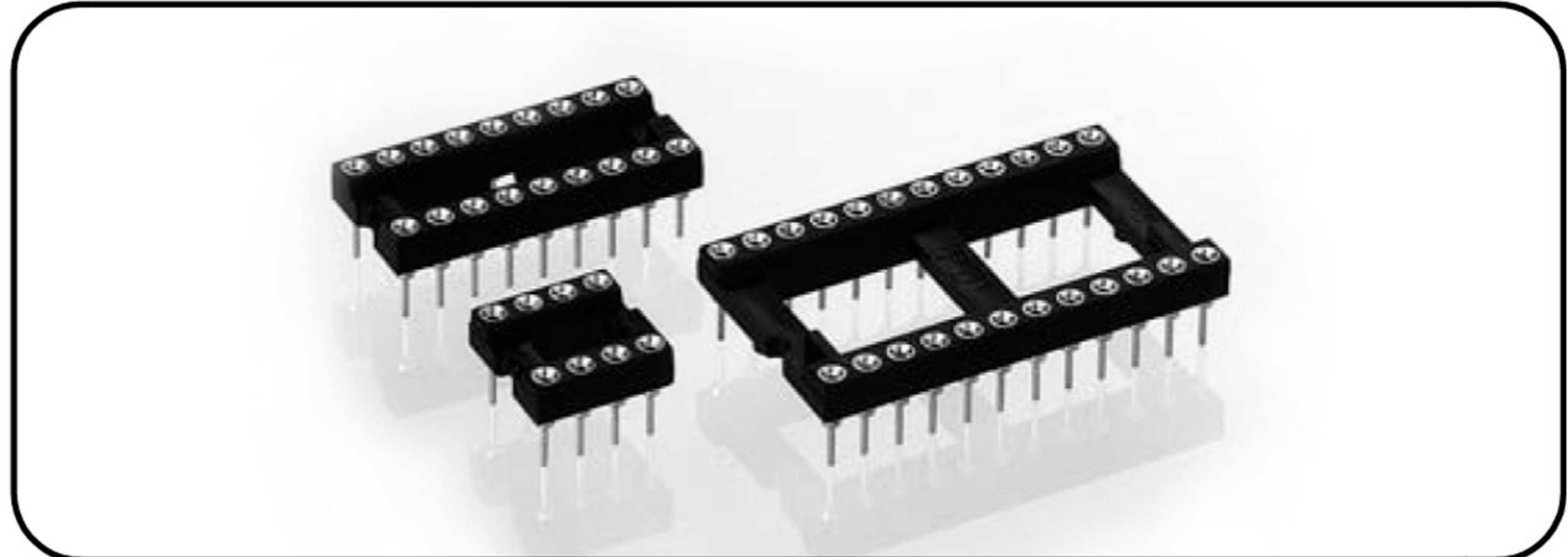


fig. 17	24	30.5	15.24	17.7	TPA10-0246-BPP0743A
fig. 18	28	35.5	15.24	17.7	TPA10-0286-BPP0743A
fig. 19	32	40.6	15.24	17.7	TPA10-0326-BPP0743A
fig. 20	36	45.7	15.24	17.7	TPA10-0366-BPP0743A
fig. 21	40	50.8	15.24	17.7	TPA10-0406-BPP0743A
fig. 22	42	53.3	15.24	17.7	TPA10-0426-BPP0743A
fig. 23	48	60.9	15.24	17.7	TPA10-0486-BPP0743A
fig. 24	50	63.5	15.24	17.7	TPA10-0506-BPP0743A
fig. 25	52	66.0	15.24	17.7	TPA10-0526-BPP0743A
fig. 26	50	63.5	22.86	25.3	TPA10-0509-BPP0743A
fig. 27	52	66.0	22.86	25.3	TPA10-0529-BPP0743A
fig. 28	64	81.2	22.86	25.3	TPA10-0649-BPP0743A

## Open frame standard low profile DIL Sockets

### Technical Specs:

Insulator:	Black glass filled polyester PBT-GF30-FR
Flammability:	UL 94V-O
Sleeve:	Brass CuZn 36pb3(36000)
Contact clip (4 finger):	Beryllium copper (C17200)
Mating pin $\varnothing$ :	0.40 to 0.56 mm
Forces:	(polished steel gauge $\varnothing$ 0.43mm)
-Insertion	2 N typ.
-Withdrawal	1 N typ.
Mechanical life:	min 100 cycles
Rated current:	1 A
Contact resistance:	max 10 m $\Omega$
Dielectric strength:	min 1000V <sub>RMS</sub>

See page 37	No. of Positions	A	B	C	Order Codes
fig. 1	6	7.6	7.62	10.1	TPA10-0063-BPP0743A
fig. 2	8	10.1	7.62	10.1	TPA10-0083-BPP0743A
fig. 3	10	12.6	7.62	10.1	TPA10-0103-BPP0743A
fig. 4	12	15.2	7.62	10.1	TPA10-0123-BPP0743A
fig. 5	14	17.7	7.62	10.1	TPA10-0143-BPP0743A
fig. 6	16	20.3	7.62	10.1	TPA10-0163-BPP0743A
fig. 7	18	22.8	7.62	10.1	TPA10-0183-BPP0743A
fig. 8	20	25.3	7.62	10.1	TPA10-0203-BPP0743A
fig. 9	22	27.8	7.62	10.1	TPA10-0223-BPP0743A
fig. 10	24	30.4	7.62	10.1	TPA10-0243-BPP0743A
fig. 11	28	35.5	7.62	10.1	TPA10-0283-BPP0743A
fig. 12	20	25.4	10.16	12.6	TPA10-0204-BPP0743A
fig. 13	22	27.8	10.16	12.6	TPA10-0224-BPP0743A
fig. 14	24	30.4	10.16	12.6	TPA10-0244-BPP0743A
fig. 15	28	35.5	10.16	12.6	TPA10-0284-BPP0743A
fig. 16	32	40.6	10.16	12.6	TPA10-0324-BPP0743A