

Dual-in-line sockets 2.54mm

Open frame
Solder tail



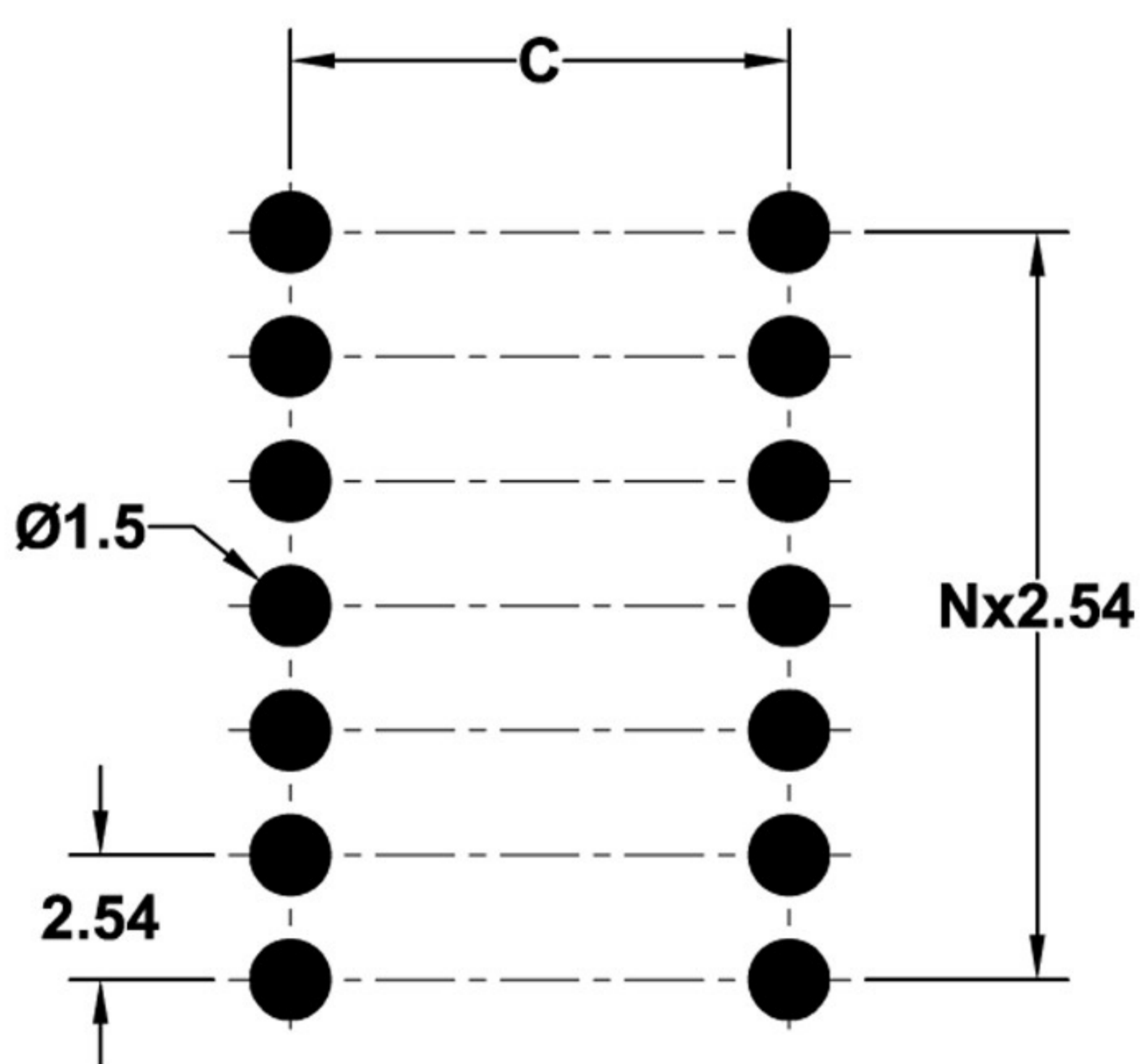
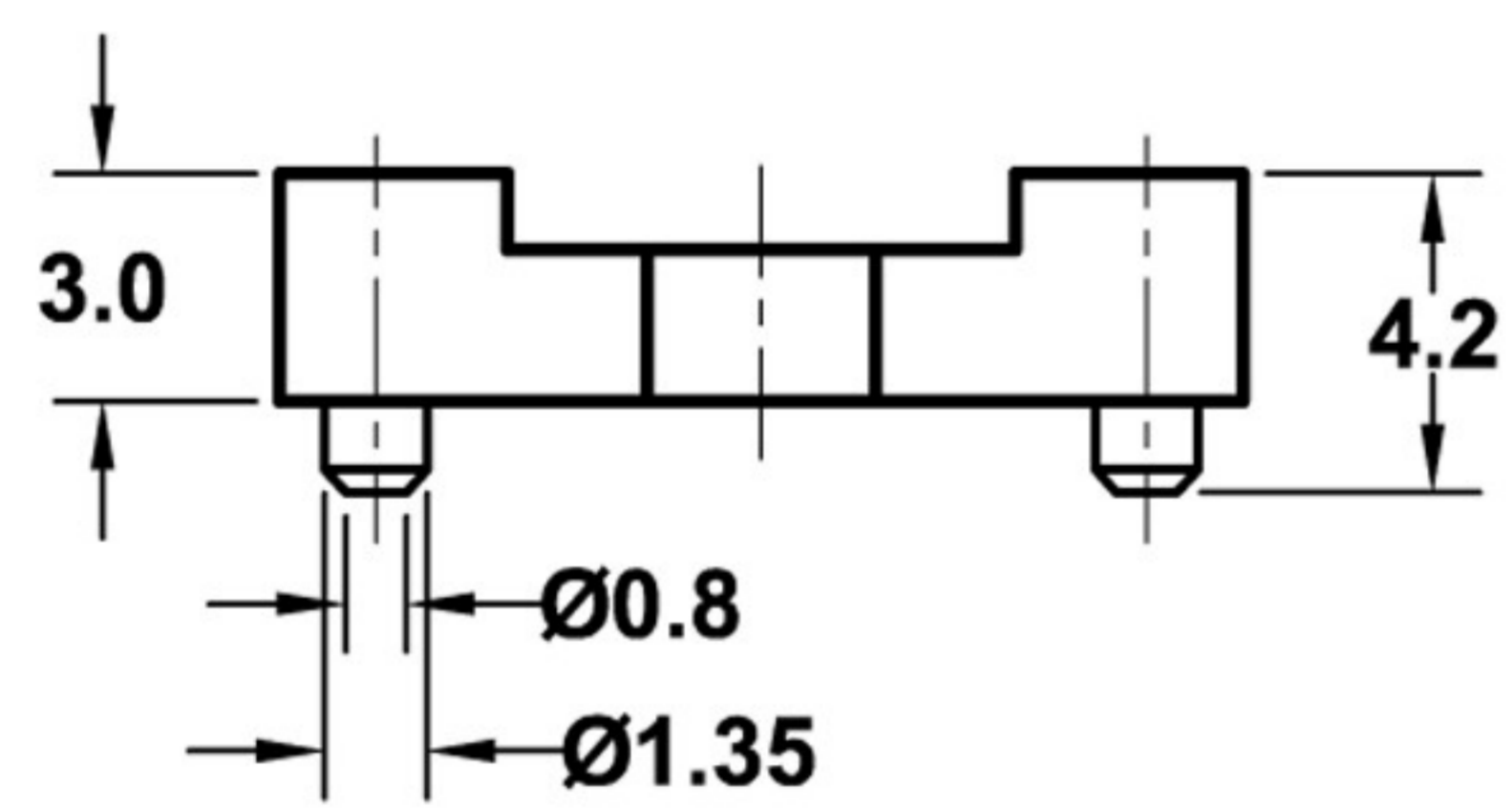
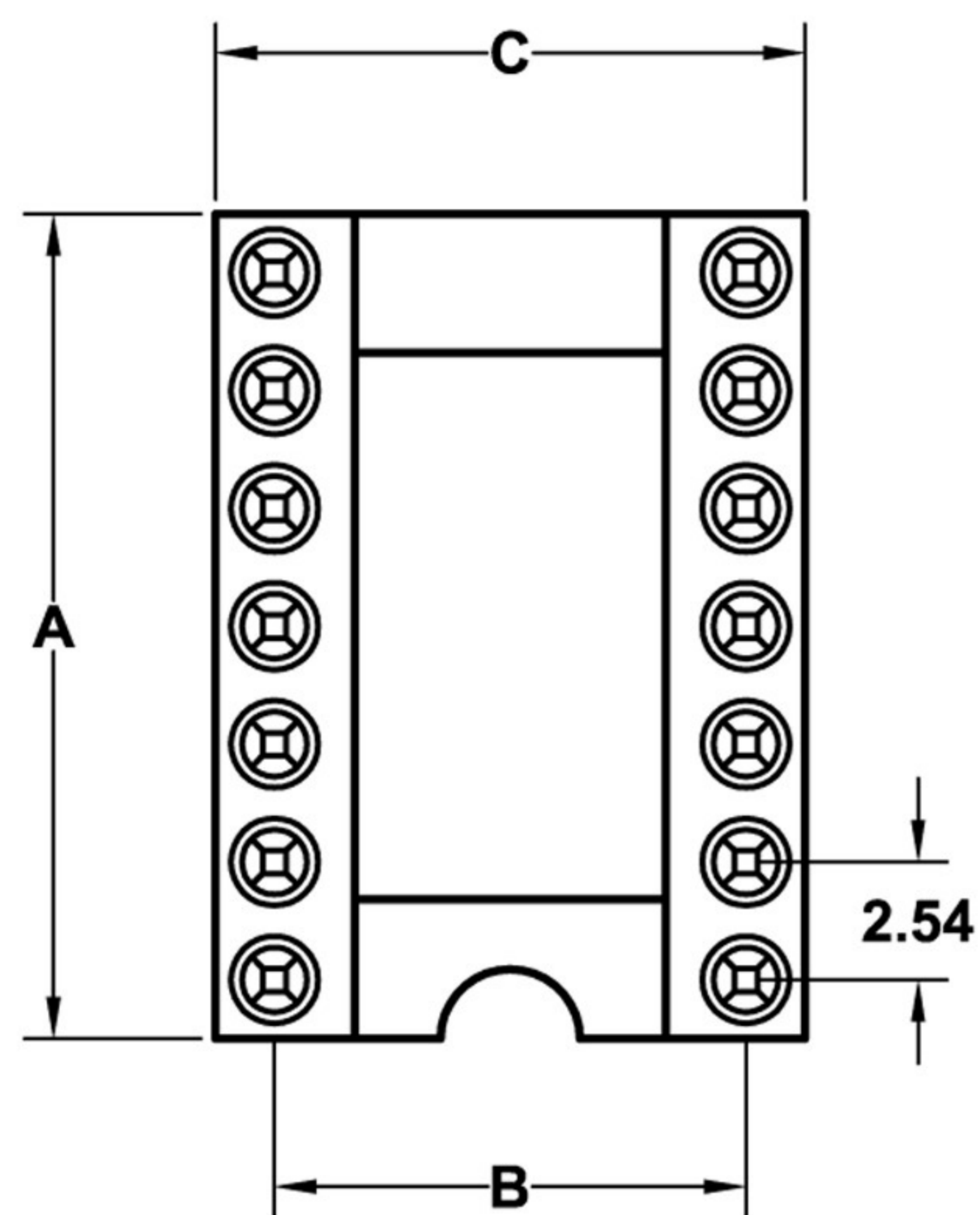
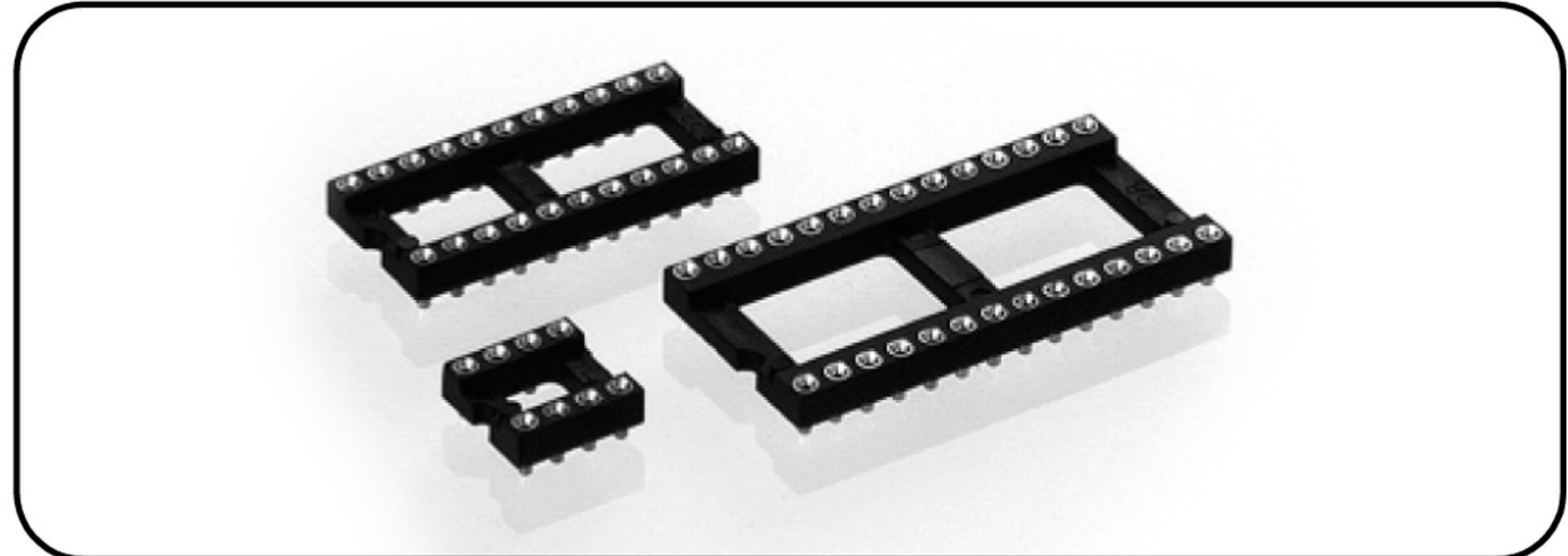
TEL:86-755-84106483 61121902
FAX:86-755-61121902
E-mail:ivan@pizconn.com.cn

Ordering information

TPD3 - NNN X - B P P 0420A

No. of Positions	Row spacing code	Pin Plating code	Clip Plating code
	3 7.62mm	1 Tin150μ"	1 Tin150μ"
	4 10.16mm	2 Tin200μ"	2 Tin200μ"
	6 15.24mm	3 GF	3 GF
	9 22.86mm	4 Gold2μ"	4 Gold2μ"
		5 Gold3μ"	5 Gold3μ"
		6 Gold10μ"	6 Gold10μ"
		7 Gold15μ"	7 Gold15μ"
		S Special	S Special

Series: TPD3



Specially designed for reflow soldering including vapor phase. With unique self-aligning floating contacts

Technical Specs:

Insulator:	Black glass filled polyester PPS-GF30-FR
Flammability:	UL 94V-O
Sleeve:	Brass CuZn 36Pb3(36000)
Contact clip (4 finger):	Beryllium copper (C17200)
Mating pin Ø:	0.40 to 0.56 mm
Forces:	(polished steel gauge Ø 0.43mm)
-Insertion	2 N typ.
-Withdrawal	1 N typ.
Mechanical life:	min 100 cycles
Rated current:	1 A
Contact resistance:	max 10 mΩ
Dielectric strength:	min 1000V _{RMS}
Coplanarity SMD terminations:	max 0.1mm

fig. 17	24	30.5	15.24	17.7	TPD3-0246-BPP0420A
fig. 18	28	35.5	15.24	17.7	TPD3-0286-BPP0420A
fig. 19	32	40.6	15.24	17.7	TPD3-0326-BPP0420A
fig. 20	36	45.7	15.24	17.7	TPD3-0366-BPP0420A
fig. 21	40	50.8	15.24	17.7	TPD3-0406-BPP0420A
fig. 22	42	53.3	15.24	17.7	TPD3-0426-BPP0420A
fig. 23	48	60.9	15.24	17.7	TPD3-0486-BPP0420A

See page 37	No. of Positions	A	B	C	Order Codes
fig. 1	6	7.6	7.62	10.1	TPD3-0063-BPP0420A
fig. 2	8	10.1	7.62	10.1	TPD3-0083-BPP0420A
fig. 3	10	12.6	7.62	10.1	TPD3-0103-BPP0420A
fig. 4	12	15.2	7.62	10.1	TPD3-0123-BPP0420A
fig. 5	14	17.7	7.62	10.1	TPD3-0143-BPP0420A
fig. 6	16	20.3	7.62	10.1	TPD3-0163-BPP0420A
fig. 7	18	22.8	7.62	10.1	TPD3-0183-BPP0420A
fig. 8	20	25.3	7.62	10.1	TPD3-0203-BPP0420A
fig. 9	22	27.8	7.62	10.1	TPD3-0223-BPP0420A
fig. 10	24	30.4	7.62	10.1	TPD3-0243-BPP0420A
fig. 11	28	35.5	7.62	10.1	TPD3-0283-BPP0420A
fig. 12	20	25.4	10.16	12.6	TPD3-0204-BPP0420A
fig. 13	22	27.8	10.16	12.6	TPD3-0224-BPP0420A
fig. 14	24	30.4	10.16	12.6	TPD3-0244-BPP0420A
fig. 15	28	35.5	10.16	12.6	TPD3-0284-BPP0420A
fig. 16	32	40.6	10.16	12.6	TPD3-0324-BPP0420A